


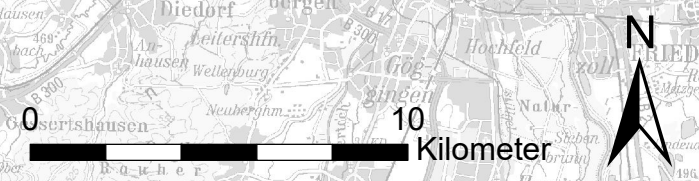
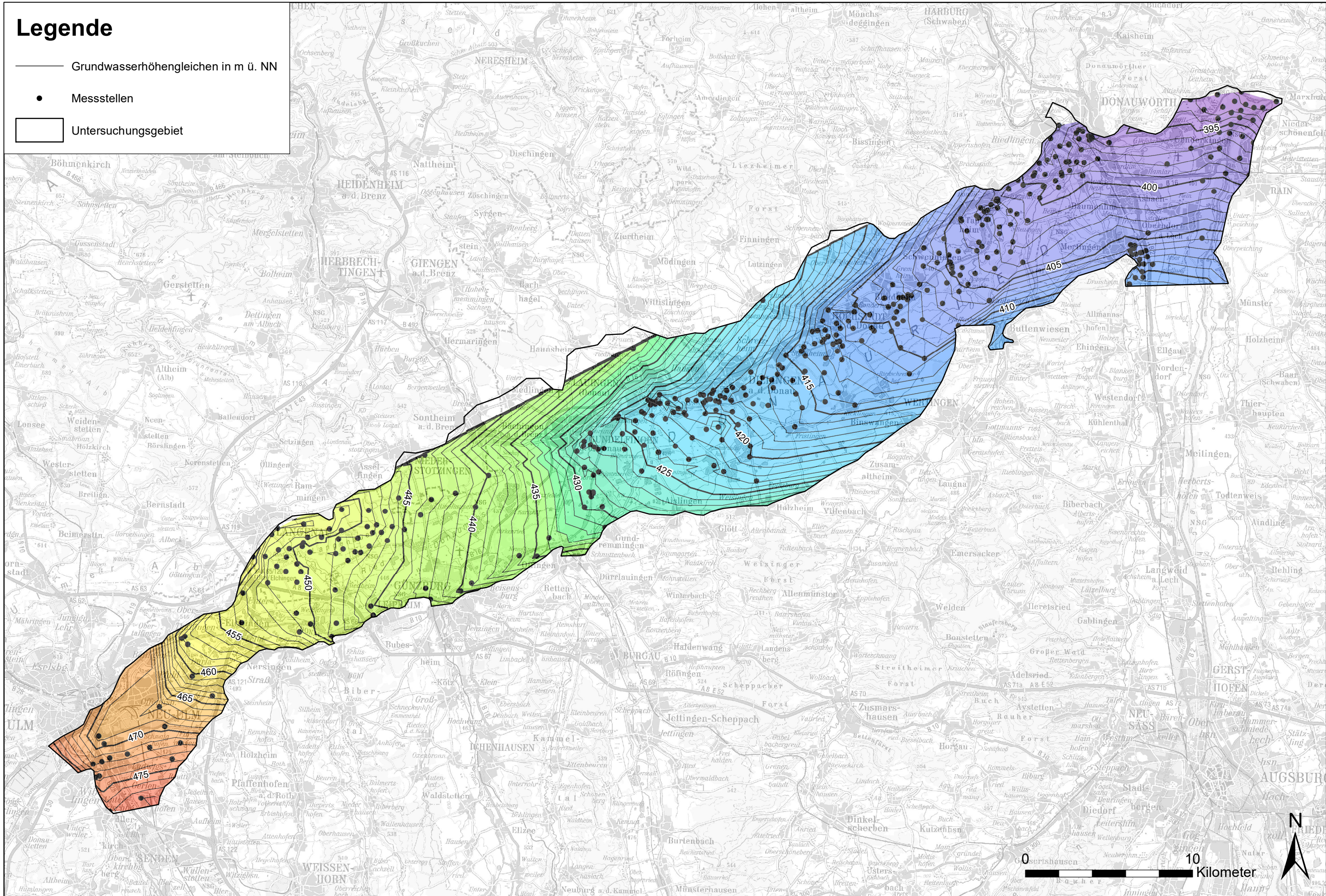





Legende

-  Grundwasserhöhengleichen in m ü. NN
-  Messstellen
-  Untersuchungsgebiet



<p>Entwurfsverfasser:</p>  	<p>Vorhabensträger:</p> <p>Freistaat Bayern Wasserwirtschaftsamt Donauwörth</p> 	<p>Hochwasserschutz Aktionsprogramm Schwäbische Donau Rückhalte-Projekt</p>	<p>Interpolierte Grundwasserhöhengleichen im quartären Grundwasserleiter am 19.12.2015</p>	<p>Maßstab: 1:200'000</p>	<p>Anlage: 5.1.5 Plan-Nr.: 1</p>
---	---	---	--	-------------------------------	--