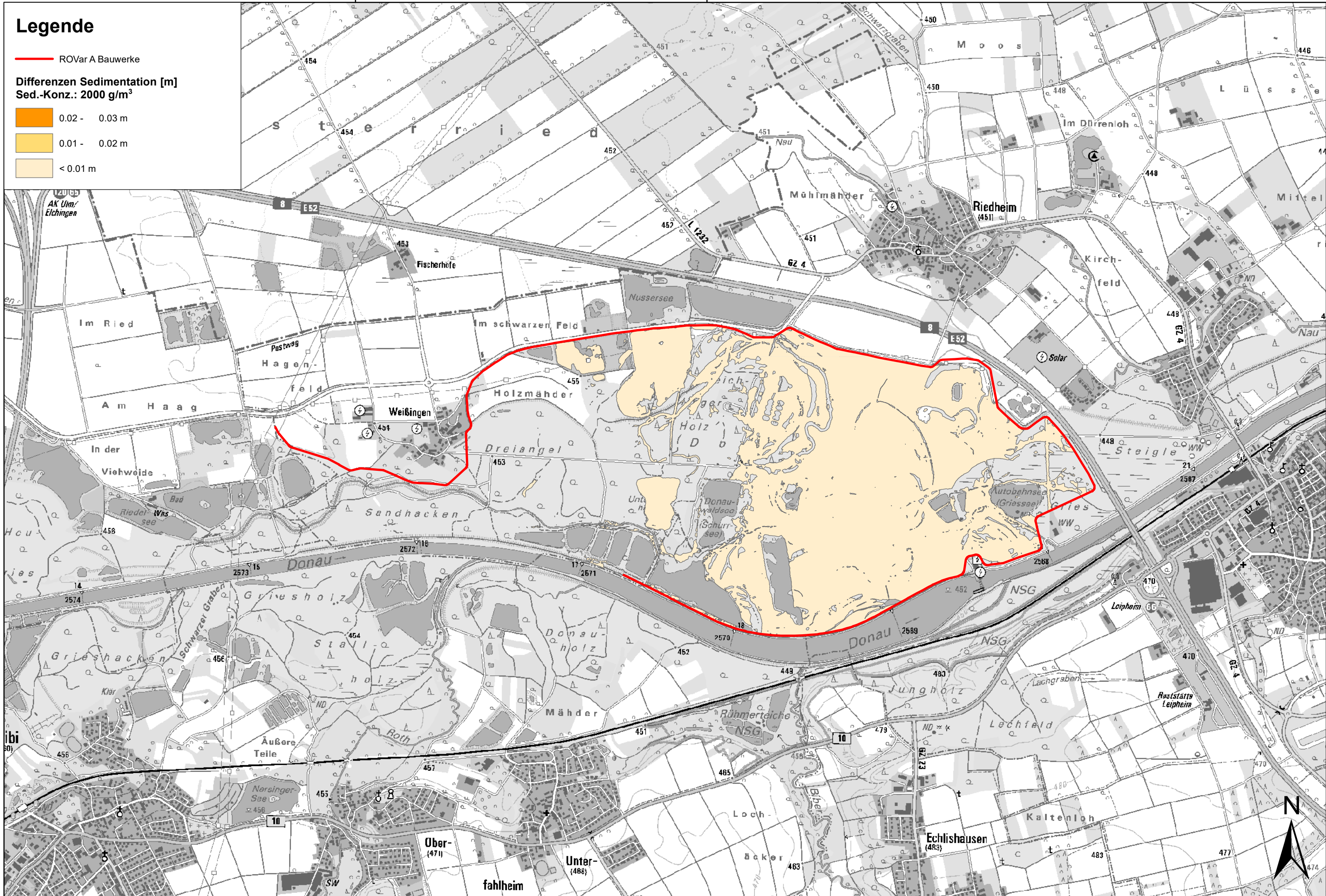
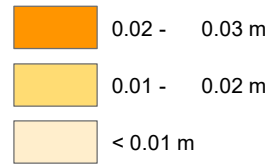




Legende

ROVar A Bauwerke

Differenzen Sedimentation [m]
Sed.-Konz.: 2000 g/m³



<p>Entwurfsverfasser:</p> 	<p>Vorhabensträger: Freistaat Bayern Wasserwirtschaftsamt Donauwörth</p> 	<p>Hochwasserschutz Aktionsprogramm Schwäbische Donau Rückhalte-Projekt</p>	<p>Rückhalteraum Leipheim Morphologie Differenzen Sedimentation ROVar A - Bezugszustand, HQ_{extrem}</p>	<p>Maßstab: 1 : 20.000</p>	<p>Anlage: 6.1.1</p>
---	--	---	--	--------------------------------	--------------------------